

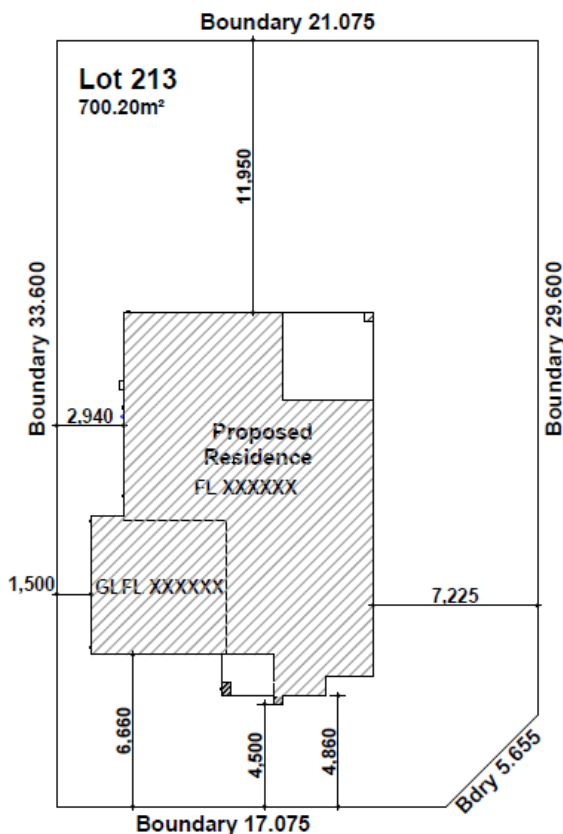
HOUSE & LAND PACKAGE



BUILDING WITH EXCELLENCE
SINCE 1994



PACKAGE PRICE
\$869,000



213 Kalangara Rd (Cnr Tarumba) Silverdale (The Cascades)

INCLUSIONS

- Ceramic floor tiles to living areas.
- 1200mm high wall tiling to ensuite x1 & main bath x 1.
- Carpet to remainder of house.
- “Color on” concrete driveway (up to 55m²).
- Vertical blinds to all windows (exc. wet areas/garage)
- 5 sensor alarm package.
- Flyscreens to all windows.
- Sarking to roof.
- National Broadband Network (NBN) Setup works – basic
- Standard BASIX requirements incl rainwater tank 3500lt
- Electric boosted solar hot water system
- Site costs – incl all piercing to slab, site classification testing, landscape plan, all dirt removal & the following if required only by local authorities - Drop edge beams, rock excavation, H1 slab upgrade / salinity treatment to slab / sewer pea out and or Bal12.5

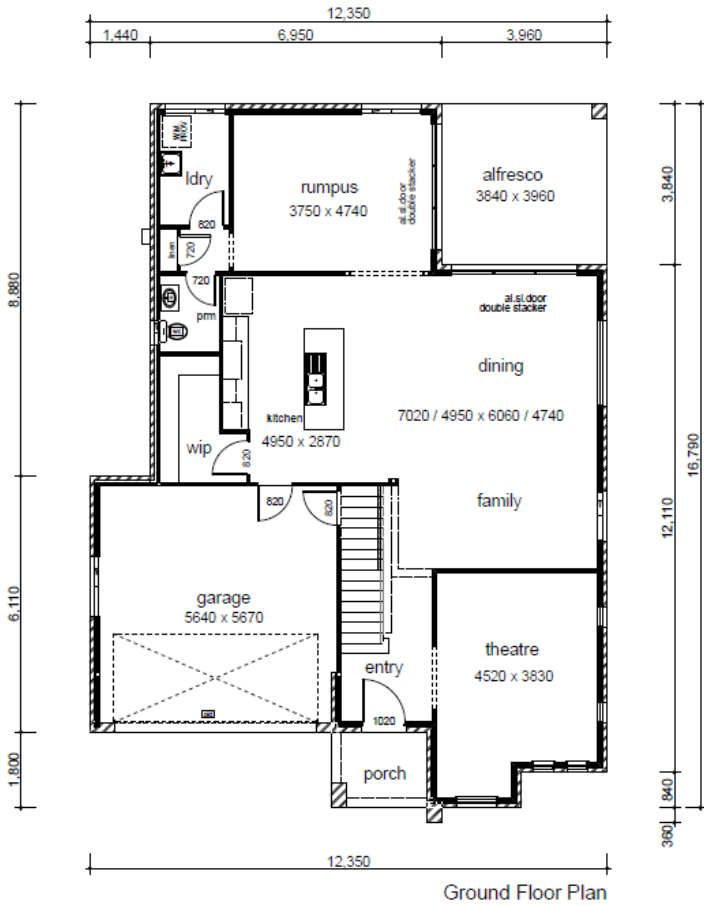
Visit www.casaview.com.au or phone 8783 8800

HOUSE & LAND PACKAGE

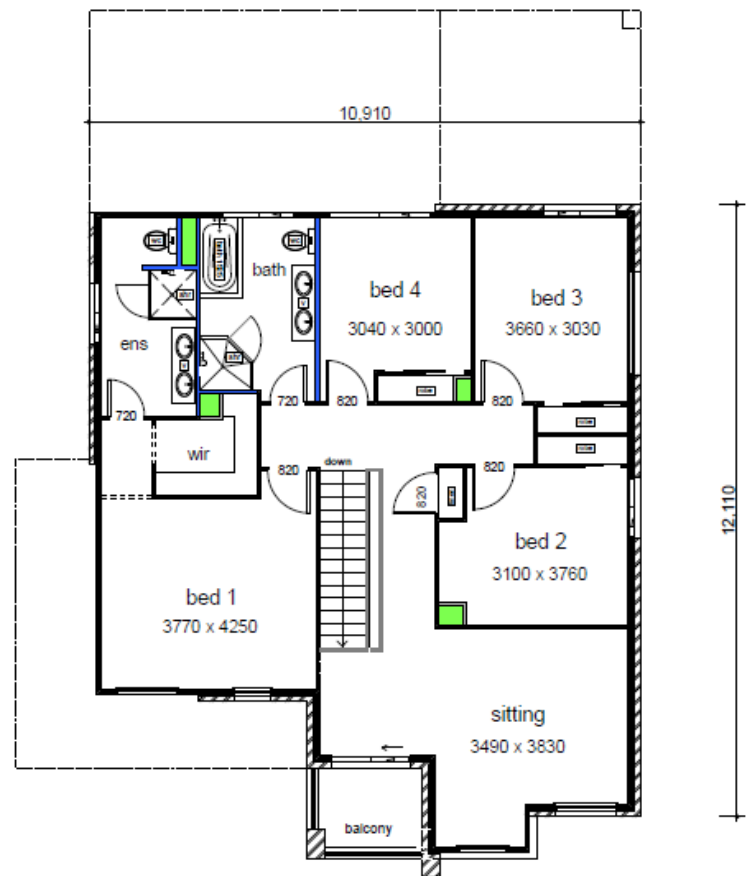


**BUILDING WITH EXCELLENCE
SINCE 1994**

Lot 213 – Elite – 306.40m²



DATA	
1. ground floor	128.27
2. first floor	119.69
3. garage	35.03
4. patio	4.10
5. alfresco	15.21
6. balcony	4.10
	306.40 m²



Contact Pandit 9826 5040, Michael 9672 6470 or Romi 9606 2052, for more information

CASAVIEW HOMES – A division of Casaview Constructions Pty Ltd. Unit 1/10 Weld Street, Prestons, NSW 2170. Builders Licence No. 55277C. These flyers have been supplied by Casaview Homes. *GST inclusive. Casaview Homes reserves the right to revise the plans, specifications and pricing without notice or obligation. All drawings, photographs & 3D renderings are for illustrative purposes only and should be used as a guide only. Price is based on facade for face brick only. All designs are subject to relevant authority approval. ©Casaview Constructions Pty Ltd trading as Casaview Homes.